



# STERLING - A

**1800 SQFT**



**FEATURES:**

- 9' main floor and basement ceiling
- Side entrance door to basement
- Double garage front attached
- Two-tone kitchen cabinets to ceiling
- Quartz countertops
- LVP flooring on main floor
- Legal basement suite option
- Elevation or exterior layout (shown above) subject to changes to comply with developer guidelines; rendering is not final
- Exterior colours to be selected by builder to comply with developer guidelines

**NOTES:**

---



---



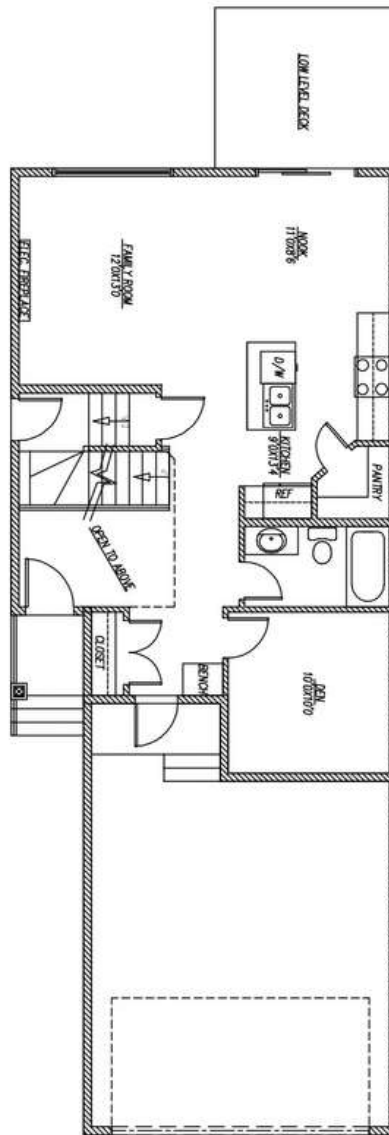
---



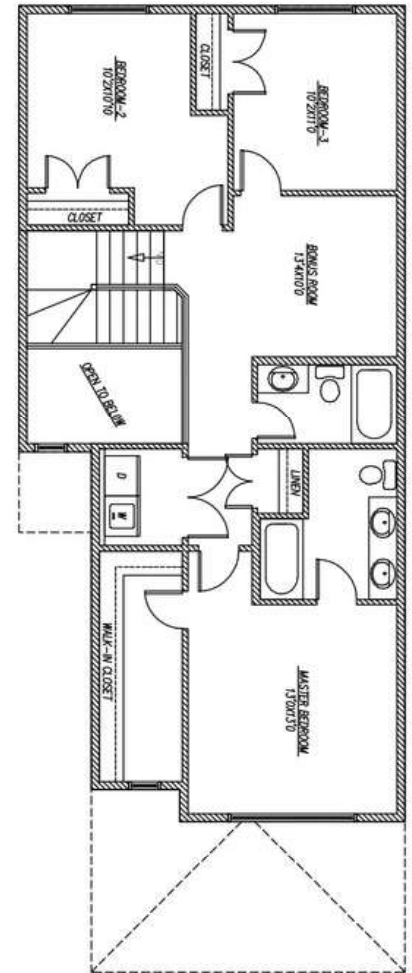
---



---



**MAIN - 828 SQFT**



**UPPER - 972 SQFT**



[www.happyplanethomes.com](http://www.happyplanethomes.com)  
[info@happyplanethomes.com](mailto:info@happyplanethomes.com)