



CONCORD - A

1500 SQFT | 3  **2.5** 

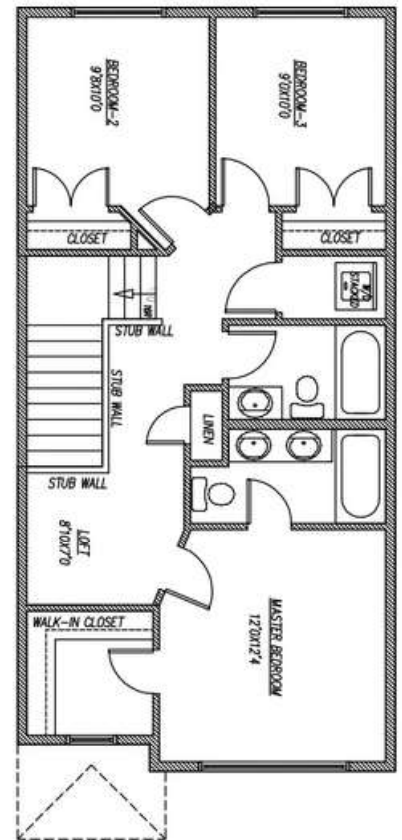
FEATURES:

- 9' main floor and basement ceiling
- Side entrance door to basement
- Rear parking pad
- Two-tone kitchen cabinets to ceiling
- Quartz countertops
- LVP flooring on main floor
- Legal basement suite option
- Elevation or exterior layout (shown above) subject to changes to comply with developer guidelines; rendering is not final
- Exterior colours to be selected by builder to comply with developer guidelines

NOTES:



MAIN - 760 SQFT



UPPER - 740 SQFT



www.happyplanethomes.com
info@happyplanethomes.com



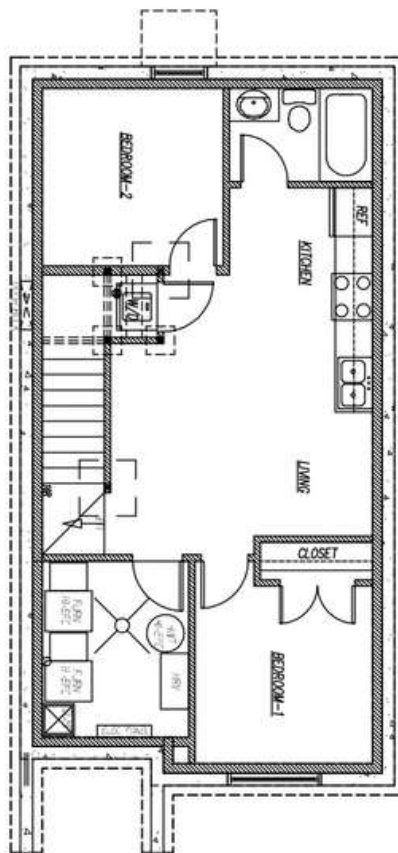
FEATURES:

- 9' main floor and basement ceiling
- Side entrance door to basement
- Rear parking pad
- Quartz countertops
- Legal basement suite option
- Elevation or exterior layout (shown above) subject to changes to comply with developer guidelines; rendering is not final
- Exterior colours to be selected by builder to comply with developer guidelines

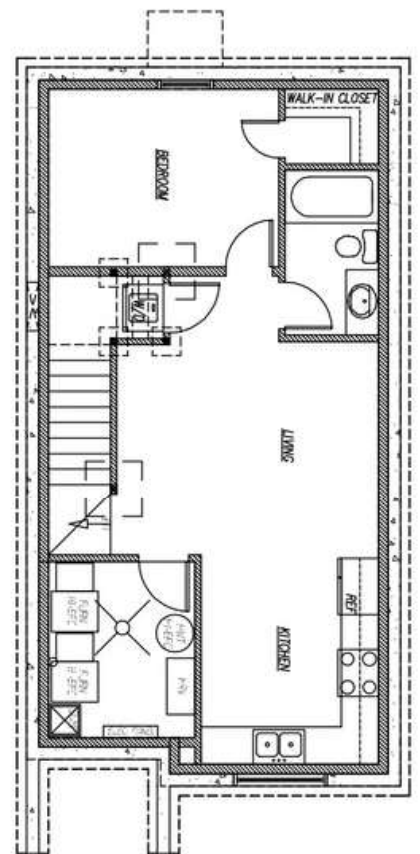
NOTES:

CONCORD - A

LEGAL BASEMENT UPGRADE



**2 BEDROOM OPTION:
602 SQFT**



**1 BEDROOM OPTION:
602 SQFT**