



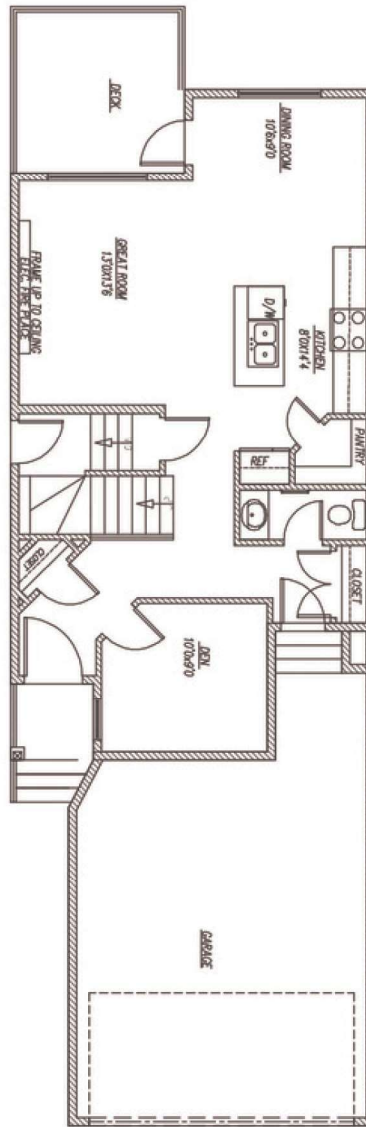
FEATURES:

- 9' main floor and basement ceiling
- Side entrance door to basement
- Double garage front attached
- Two-tone kitchen cabinets to ceiling
- Quartz countertops
- LVP flooring on main floor
- Legal basement suite option
- Elevation or exterior layout (shown above) subject to changes to comply with developer guidelines; rendering is not final
- Exterior colours to be selected by builder to comply with developer guidelines

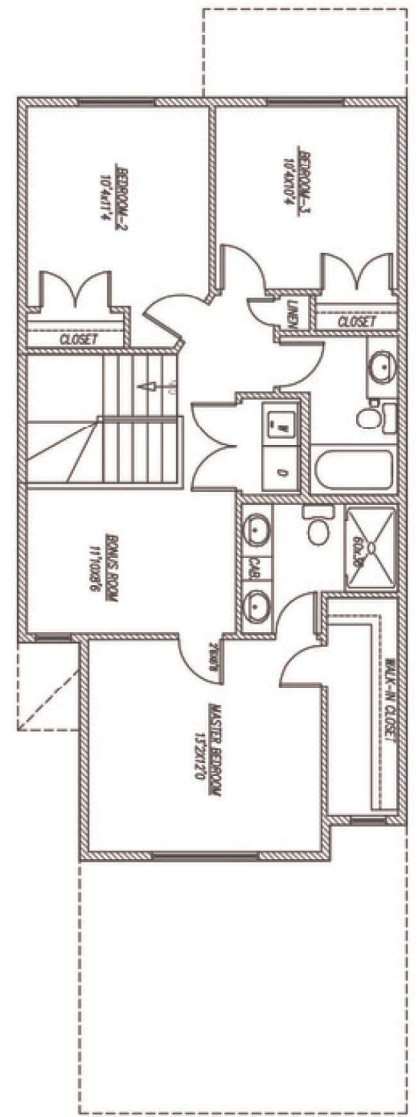
NOTES:

WINDSOR - A

1600 SQFT | 3  2.5 



MAIN - 768 SQFT



UPPER - 832 SQFT